



Prime Meridian Walk, London, E14 2DY

£575,000



Prime Meridian Walk, London, E14 2DY

£575,000

Nestled in the vibrant area of Prime Meridian Walk, London E14, this modern apartment offers a perfect blend of comfort and style. Spanning an impressive 883 square feet, the property boasts two well-proportioned bedrooms, making it an ideal choice for professionals, couples, or small families seeking a contemporary living space.

The apartment features two stylish bathrooms, providing convenience and privacy for residents and guests alike. Built in 2015, the property benefits from contemporary finishes and fixtures, ensuring a fresh and modern aesthetic throughout.

Located in a prime area, residents will enjoy easy access to local amenities, including shops, restaurants, and excellent transport links, making commuting to the city centre a breeze. This apartment is not just a home; it is a lifestyle choice, offering the perfect balance of urban living and comfort.

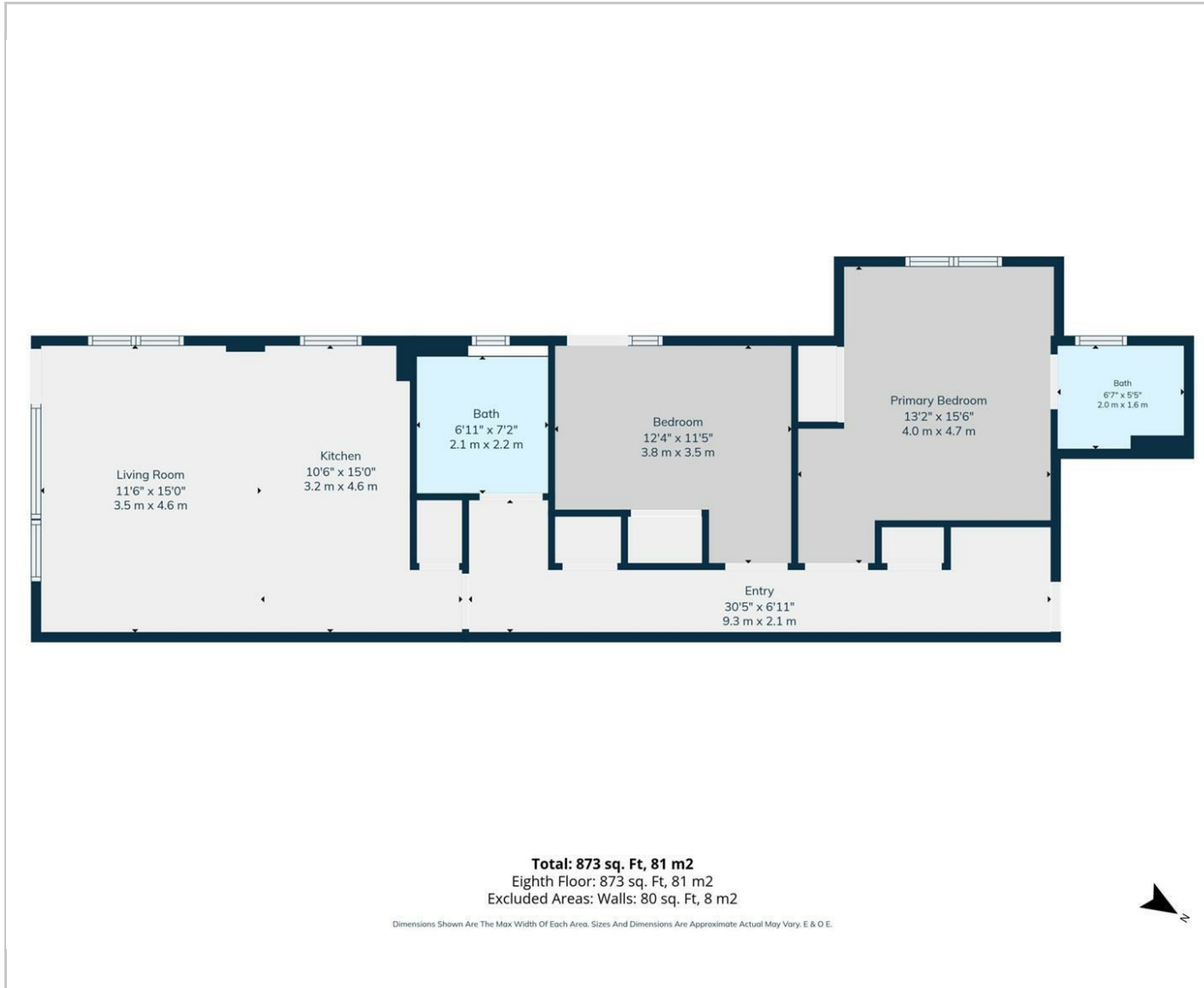
Key Features

- Large Two bedrooms, 2 Bathrooms
- Riverfront Apartment
- Views of the O2
- Two Private Balconies overlooking Thames
- under 2 minutes from DLR station
- Walking distance to canary wharf
- under 10 Minutes journey to Bank

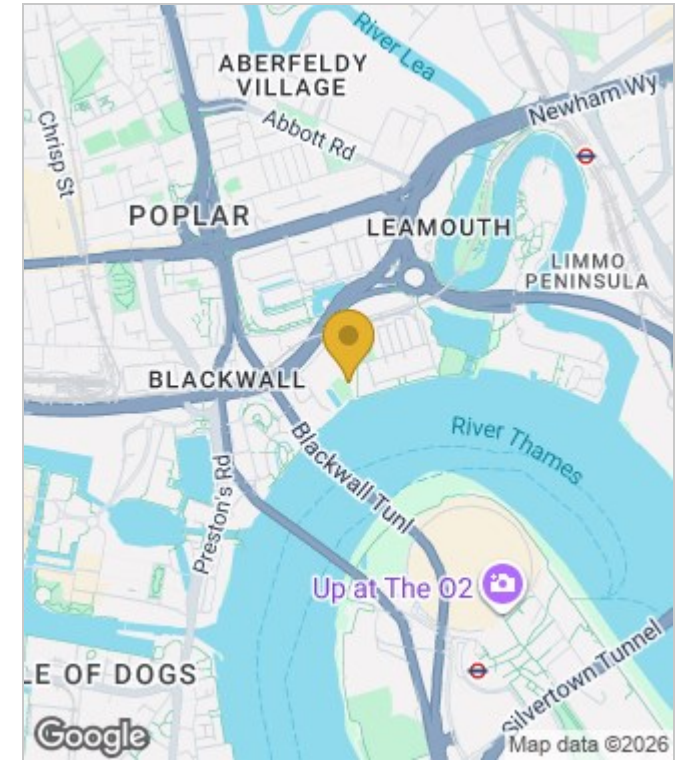


Council Tax Band: F

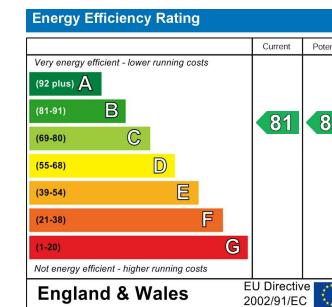
Floor Plans



Area Map



Energy Performance Graph



These particulars, whilst believed to be accurate are set out as a general outline only for guidance and do not constitute any part of an offer or contract. Intending purchasers should not rely on them as statements of representation of fact, but must satisfy themselves by inspection or otherwise as to their accuracy. No person in this firm's employment has the authority to make or give any representation or warranty in respect of the property.